

TAP (Thornton Adjustable Positioner)

SLEEP APNEA APPLIANCES



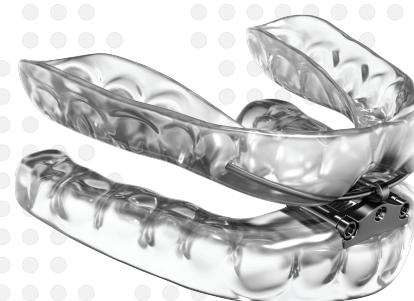
The Thornton Adjustable Positioner® (TAP®) is a simple, patient-friendly treatment solution for snoring and sleep apnea. The TAP holds the lower jaw in a forward position so that it does not fall open during the night and cause the airway to collapse. It maintains a clear airway to reduce snoring and improve breathing.

The unique design allows the patient to fine-tune his/her treatment at home and work with the clinician to achieve the best results. Patients are empowered to manage the degree of lower jaw protrusion over as many nights as it takes to achieve the optimal treatment position. The TAP has a single point of central adjustment preventing an irregular bite and discomfort that may result from uneven bilateral adjustment.

TAP III



DREAM TAP



SOMNODENT

SLEEP APNEA APPLIANCES



COMFORTABLE FOR PATIENTS

- 88% of patients reported regular use of their SomnoDent device
- Unique SMH BFlex technology provides unparalleled comfort
- Patients can talk and open/-close their mouths and lips while wearing device

HIGH QUALITY

- FDA 510K cleared and manufactured at an ISO 13485 certified facility
- Customized using the highest quality acrylic which does not discolor or attract odors
- Device life expectancy 3-5 years; and devices have a 3 year warranty against manufacturing defects

UNIQUELY COMPLIANT

- The 1st and only dorsal fin oral device w/ micro-recorder that objectively records compliance data
- Reports include hours device is worn and patient's supine or non-supine head position

CLINICALLY EFFECTIVE

- 15+ independent studies demonstrate the device's significant clinical benefits
- 91% of patients reported improvement in sleep quality while wearing SomnoDent

COMFORT QUALITY COMPLIANT EFFECTIVE

CLASSIC ORIGINAL INNOVATION

- Highest quality acrylic
- Medical grade stainless steel ball clasps or SMH BFlex liner for retention
- Lingual-less option available for additional tongue space



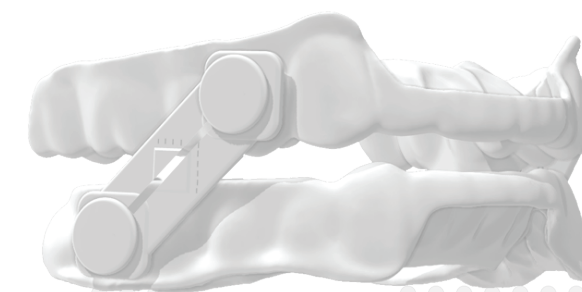
HERBST ADVANCE™ VISUAL SIMPLICITY

- E0486 Medicare verified
- Visual calibration indicator makes it easy to measure how far device has been advanced
- SMH BFlex offers superior comfort and retention
- Longer range of advancement (8mm) leading to fewer device resets over the life of the device

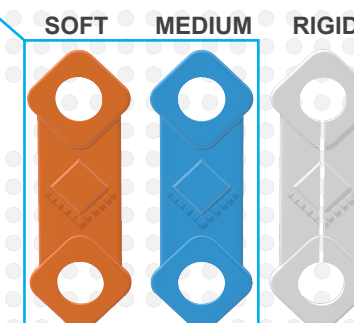


DDSO

DIAMOND DIGITAL SLEEP ORTHOTIC



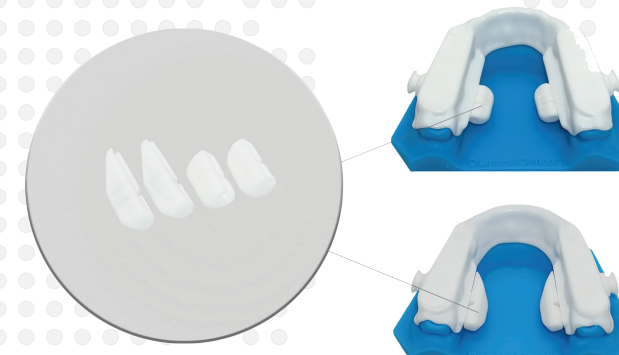
Diamond's elastomeric bands provide feedback mechanism; 'soft & medium' are not intended for the treatment of OSA.



Band ID/Size



Available in 17-21mm



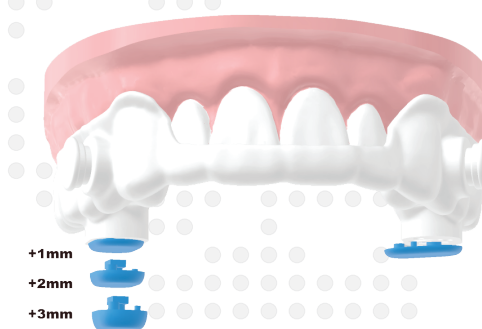
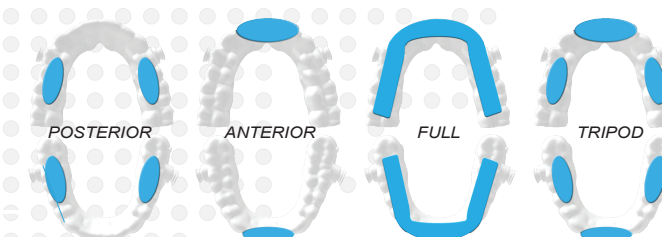
REMOVABLE TONGUE POSITIONERS (TP)

- Two modular sizes to accommodate the differences in patient anatomy
- Reversible and interchangeable
 - Flip tongue positioner to opposite side to change the angle and position for patient comfort
- Remove with ease! For patients who are non-compliant; simply slide the TP off and cut away the connecting tab.

QUALITY CAD/CAM ACCURACY DURABILITY

- FDA 510K cleared and manufactured with medical-grade nylon
- Customized for each patient using innovative and proprietary CAD/CAM technology
- Does not discolor or attract odors when used as instructed
- The ONLY device that allows 3-dimensional titration
- Device life expectancy 5+ years
- 5 Year unconditional warranty with unlimited \$100 warranty reprints

OCCUSAL OPTIONS



3-DIMENSIONAL TITRATION

- Diamond Orthotic's unique and proprietary vertical shim mechanism allows for vertical titration of mandible.
- Practitioners can titrate patients 1mm-3mm.

****Patent Pending****